



Florida Division of State Fire Marshal

The Florida Fire Marshals and Inspectors Association,
"Organization" (§633.026)

Informal Interpretation Request

Date:

National Fire Protection Association (NFPA) Document No. applied by the LFO: 101

Edition of the NFPA Document: 2018

Chapter and Paragraph of the NFPA Document: 18.2.5.2

Explain how the Petitioner's substantial interests are being affected by the LFO's interpretation of the NFPA citation above:

We designed the area in question as a "smoke suite= suite 2A" per NFPA 18.2.5.7.3 Patient Care Non-Sleeping Suite Means of Egress. There are not exit signs directing occupants to this area or location. This was done for patient safety reasons as the adjacent existing patient unit is for behavioral health patients and is a locked unit.

Enter a statement of the LFO's interpretation of the NFPA citation above and identify the manner in which the statement was rendered:

Comment #1- Second floor had dead-end corridor near public elevator. The dead-end corridor exceeds 30 ft. Illustrate compliance with NFPA 101:18.2.5.2. This comment was received via email response to the general contractor who was trying to obtain local permit for construction.

Enter a statement of the interpretation that the Petitioner contends should be given to the NFPA citation above and a statement supporting the Petitioner's interpretation:

There is no dead-end corridor because the area in question is not a "corridor", it is a smoke suite allowable by the NFPA.

Explain how the Petitioner's substantial interests are being affected by the question below:

The owner will have to renovate additional space on the building floor in question to eliminate what the LFO is calling a dead end corridor. The estimated cost of the work is \$75,000. The area the LFO wants petitioner to connect to eliminate the dead-end is a Behavioral Health Patient Unit. Even with door access control this will create a patient safety issue. (see attached floor plan and NFPA reference summary)

Rulings herein expressed are not the formal position of the Florida State Fire Marshal's Office

Florida Fire Marshals and Inspectors Association | P. O. Box 325 Hobe Sound, FL 33475 | Tel 772-349-1507 | Fax 772-546-6675

Website: www.FFMIA.org | Email: info@ffmia.org | http://www.myfloridacfo.com/sfm/bfpr/bfpr_index.htm

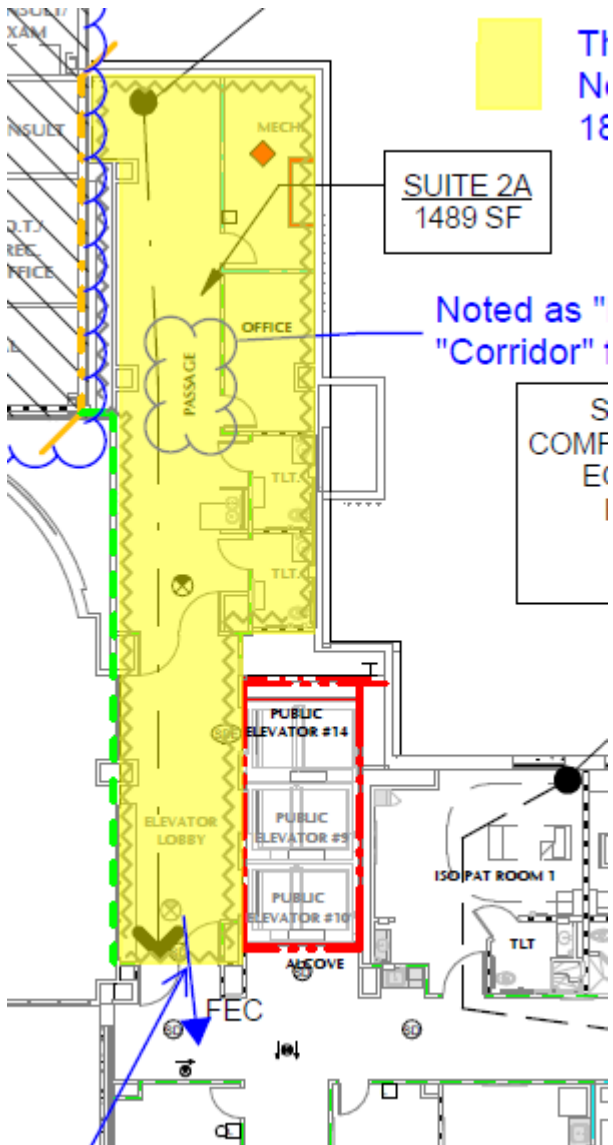


Florida Division of State Fire Marshal

The Florida Fire Marshals and Inspectors Association,
"Organization" (§633.026)

Enter the Petitioner's question concerning an interpretation of the FFPC:

Based on the additional information provided by the petitioner, is this area a "smoke suite" per NFPA 18.2.5.7.3 and not a dead end corridor as the LFO has commented?



Rulings herein expressed are not the formal position of the Florida State Fire Marshal's Office

Florida Fire Marshals and Inspectors Association | P. O. Box 325 Hobe Sound, FL 33475 | Tel 772-349-1507 | Fax 772-546-6675

Website: www.FFMIA.org | Email: info@ffmia.org | http://www.myfloridacfo.com/sfm/bfpr/bfpr_index.htm



Florida Division of State Fire Marshal

The Florida Fire Marshals and Inspectors Association,
"Organization" (§633.026)

Committee Majority answer: No

The petitioner is using a variety of terms throughout this request. The plans show "passage" with a note on the petition that it is "Noted as "Passage" NOT a "Corridor" for egress." The plans also show the area highlighted in yellow with another note on the petition that "This is our Patient Care Non-Sleeping Suite (per 18.2.5.7.3)."

A Patient Care Non-Sleeping Suite is defined as a suite for treating patients with or without patient beds not intended for overnight sleeping. The example of this type of suite provided in the handbook is an emergency room suite. Corridor is not defined in 101 or the NFPA glossary of terms. It is, however, defined in the Florida Building code as "an enclosed exit access component that defines and provides a path of egress travel." While passage is not defined by NFPA, passageway is defined in the NFPA Glossary as a corridor or hallway, thus labeling it as a "passage" is no different than labeling it a corridor.

Region 1 - Delegate: **Byron Bennett**, Fire Chief North Bay Fire Control District
Alternate: **William (Michael) Hall**, Fire Chief, Marianna Fire Rescue

Region 2 - Delegate: **Jason R. Greisl** Division Chief of Fire Prevention/Fire Marshal Tallahassee Fire
Alternate: N/A*

Region 3 - Delegate: **James Groff**, Jacksonville Fire Rescue.
Alternate: **Robert Growick** Division Chief /Fire Marshall City of St. Augustine

Region 4 - Delegate: **Cheryl Edwards**, Lakeland Fire Rescue
Alternate: **Karl Thompson**

Region 5 - Delegate: **Anthony Apfelbeck**, Altamonte Springs Building and Fire Safety Department
Alternate: **Christina Diaz**, Seminole County Fl.

Region 6 - Delegate: **Robert Salvaggio**, Cape Corral Fire Rescue
Alternate: **Janet Washburn**, Bonita Springs Fire Control and Rescue District

Region 7 - Delegate: **Matthew E. Welhaf**, Boca Raton Fire Rescue Services Department
Alternate: **(Kenneth) Sean Brown**, Broward Sheriff Fire Rescue & Emergency Services Department.

Rulings herein expressed are not the formal position of the Florida State Fire Marshal's Office

Florida Fire Marshals and Inspectors Association | P. O. Box 325 Hobe Sound, FL 33475 | Tel 772-349-1507 | Fax 772-546-6675

Website: www.FFMIA.org | Email: info@ffmia.org | http://www.myfloridacfo.com/sfm/bfpr/bfpr_index.htm



Florida Division of State Fire Marshal

The Florida Fire Marshals and Inspectors Association,
"Organization" (§633.026)

Committee Region Map



Rulings herein expressed are not the formal position of the Florida State Fire Marshal's Office

Florida Fire Marshals and Inspectors Association | P. O. Box 325 Hobe Sound, FL 33475 | Tel 772-349-1507 | Fax 772-546-6675

Website: www.FFMIA.org | Email: info@ffmia.org | http://www.myfloridacfo.com/sfm/bfpr/bfpr_index.htm